

# SO MUCH TO LEARN!



Learn about

Different Adaptations

Behavioural

Things that organisms do



Most adaptations fit into one of these categories

Number of offspring, ability to digest certain things, etc



Physiological

Features you can see (colour, shapes, limbs)



Structural



# Match the adaptation to the animal

## Who:

has long arms to easily move through trees

has webbed feet to help them swim

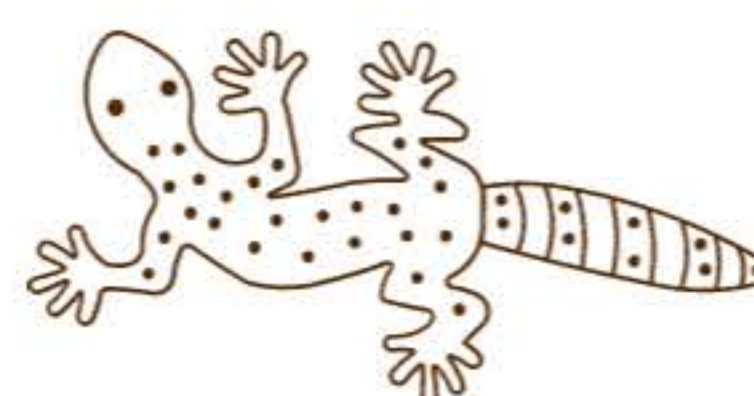
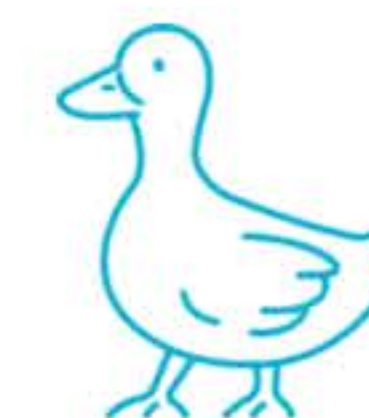
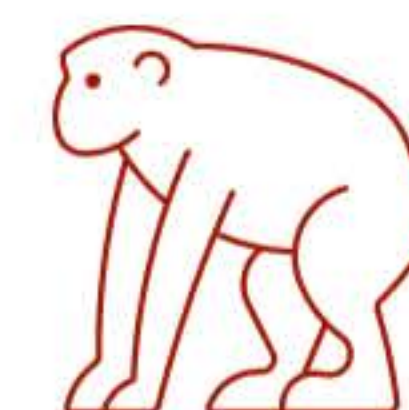
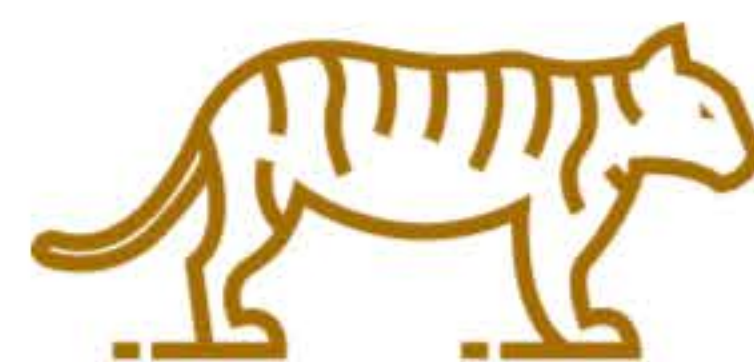
has black and white stripes to blend in with each other and confuse predators

has stripy markings to hide when hunting prey in the trees

has a long neck for reaching leaves on tall trees

has camouflage to blend in with surroundings

can lose their tail to escape predators





Match the bird to its beak.  
How is their beak suited to their food?

What bird do you think has this beak?

What do you think this bird eats?  
How is this beak suited to this food?





Choose two animals and show their adaptations and the functions of the adaptations

Animal: \_\_\_\_\_

Adaptations	Functions

Animal: \_\_\_\_\_

Adaptations	Functions

## Example

A lemur has a long tail to help it balance as it moves through the trees





# SO MUCH TO LEARN!

Can you guess what animal has these coverings/markings?  
How do they help this animal in the wild?

This is a \_\_\_\_\_



How this helps the animal:

This is a \_\_\_\_\_



How this helps the animal:

This is a \_\_\_\_\_



How this helps the animal:

This is a \_\_\_\_\_



How this helps the animal:

This is a \_\_\_\_\_



How this helps the animal:

This is a \_\_\_\_\_



How this helps the animal:



Research  
and  
Reporting



**Choose an animal and research the following:**

Name of animal	Movement
Body covering	How it protects itself
Diet and how it gets its food	Special features
Habitat	Status in the wild
Distribution	Threats in the wild
Courtship and reproduction	Ways to overcome threats



Create a fantasy animal.  
Think about what adaptations it may need.

**HINT**

Think about  
food, habitat,  
predator/prey



What is your animal called?

Sketch your animal here



**Food**

What does it eat?

What adaptations does it have  
to help it find/catch its food?

**Habitat**

Where does it live?

What adaptations does it have  
that suit it to its habitat?

**Predator/Prey**

Does it need to hunt/hide  
from/escape other animals?

What adaptations does  
it have to help with this?



**How are these animals suited to their environments?**

Where does this animal live? (Choose between: desert, river, forest, mountains, savanna)

What adaptations does this animal have that suits them to this habitat?



Spider monkey



Blue Duck/Whio



Kea



Giraffe

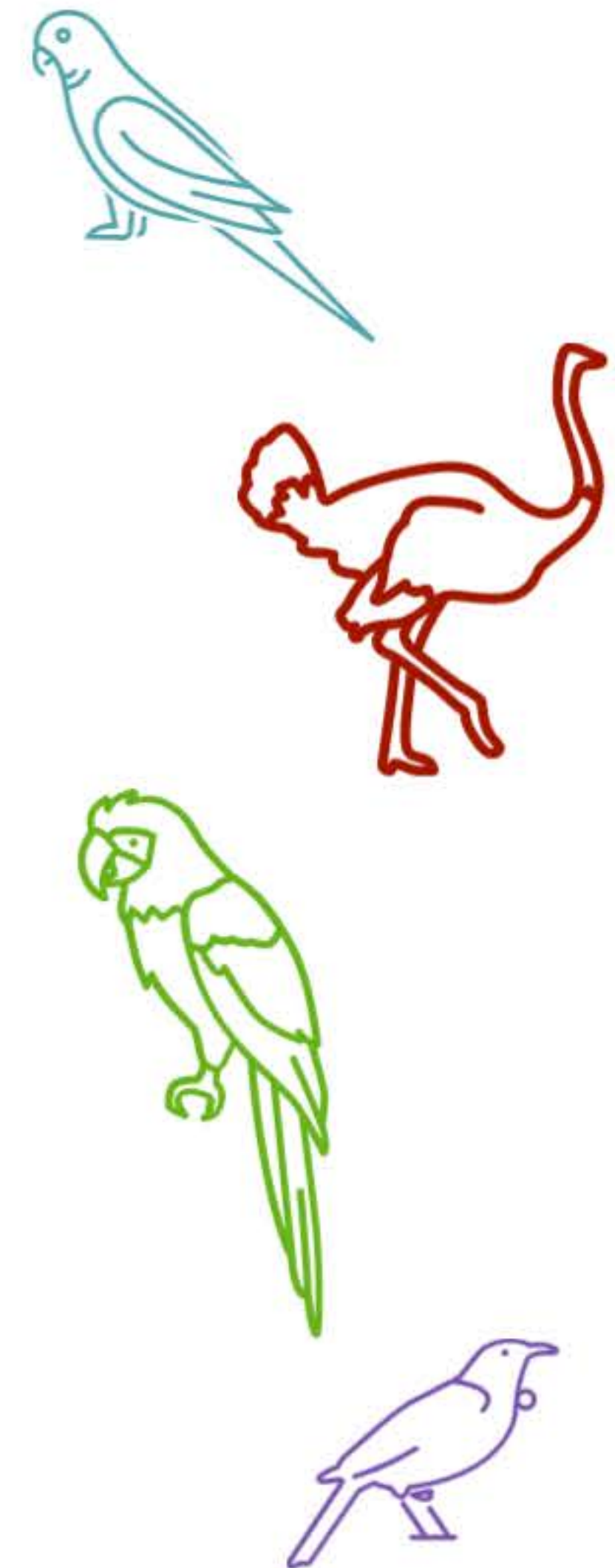


Meerkat



Observation  
and  
Reporting

Choose a bird species. Observe it in its enclosure, and use the information available around its enclosure to record details about the way it lives and its ecological niche.



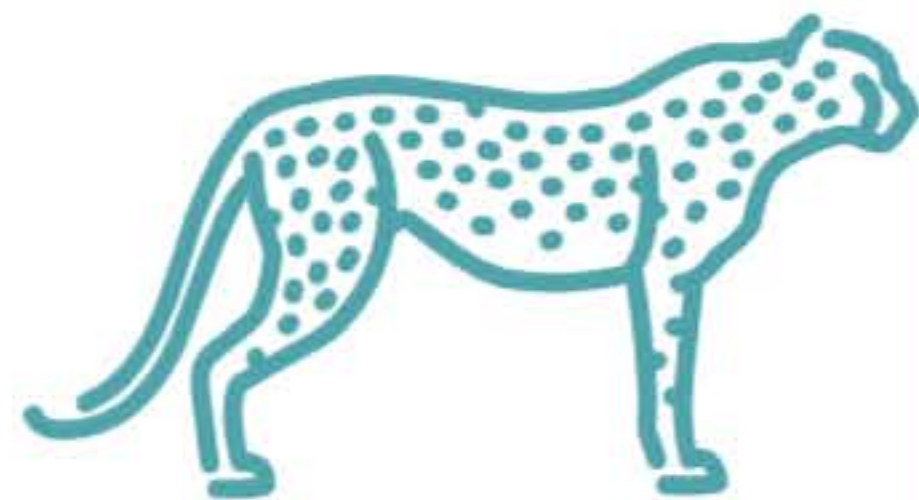
<p>Chosen bird: Scientific name: Maori name:</p>	<p>Habitat:</p>
<p>Diet and how it gets its food:</p>	<p>Record any information about the animal's ecological niche</p>
<p>Observe its locomotion, limb movement and structure. Describe how it moves. Can you provide any reasons for this?</p>	<p>Research the structure of your animal's feet. Write some notes about the bone structures and features that allow it to survive in its habitat. Comment on any other adaptations that help with movement. Include a labelled diagram.</p>
<p>Describe the body structures that let it move in this way. Can you provide reasons for this?</p>	



Observation  
and  
Reporting



Choose a mammalian carnivore species. Observe it in its enclosure, and use the information available around its enclosure to record details about the way it lives and its ecological niche.



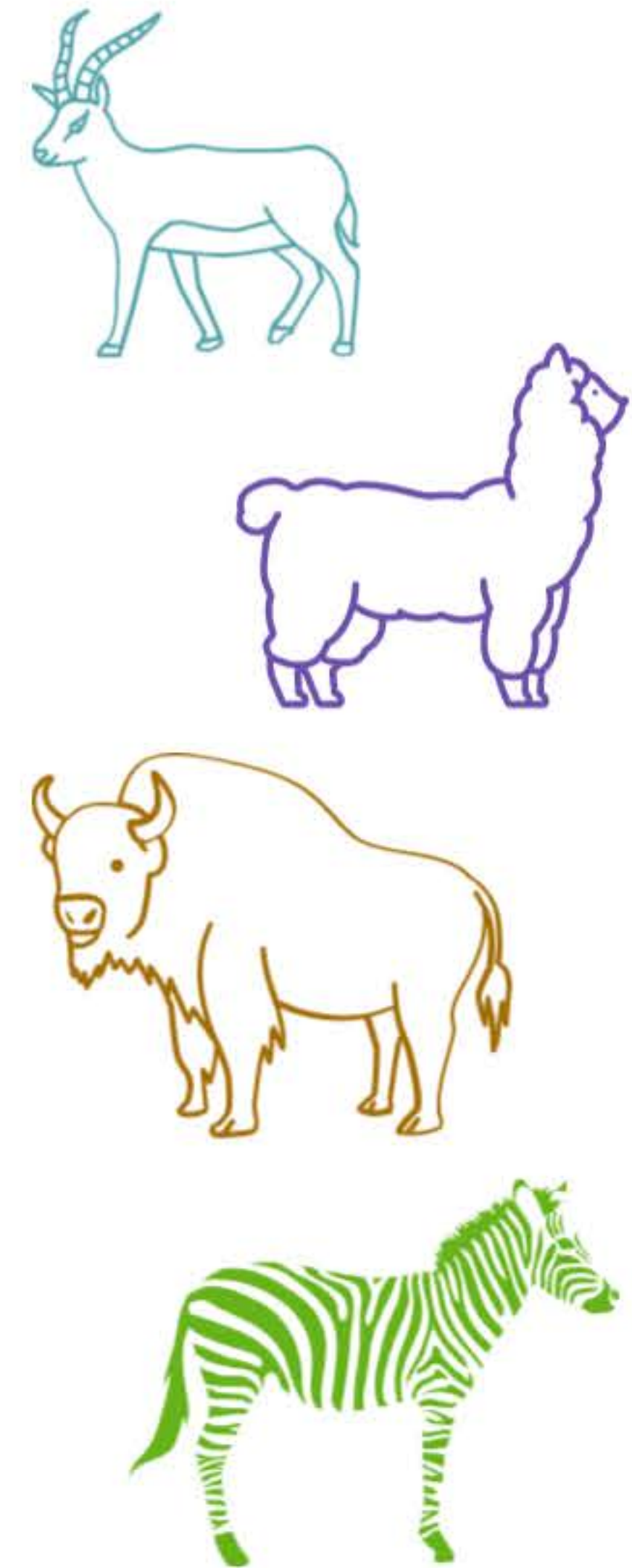
<p>Chosen carnivore: Scientific name: Maori name:</p>	<p>Habitat:</p>
<p>Diet and how it gets its food:</p>	<p>Record any information about the animal's ecological niche</p>
<p>Observe its locomotion, limb movement and structure. Describe how it moves. Can you provide any reasons for this?</p>	<p>Research the structure of your animal's front limb. Write some notes about the bone structures and features that allow it to survive in its habitat. Comment on any other adaptations that help with movement. Include a labelled diagram.</p>
<p>Describe the body structures that let it move in this way. Can you provide reasons for this?</p>	



## Observation and Reporting



Choose a mammalian herbivore species. Observe it in its enclosure, and use the information available around its enclosure to record details about the way it lives and its ecological niche.

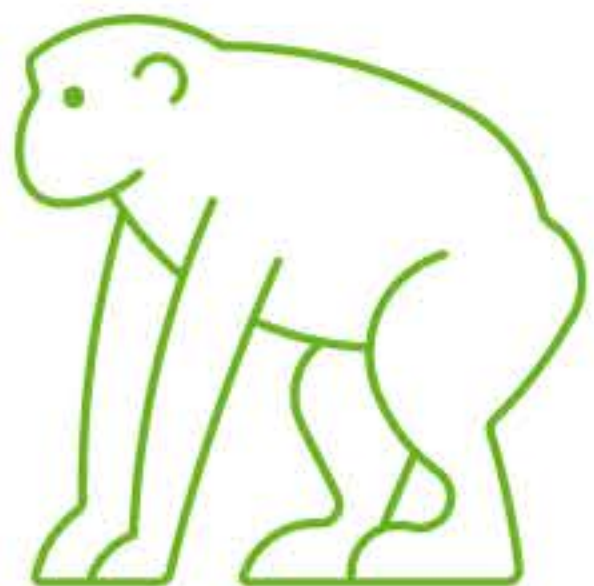
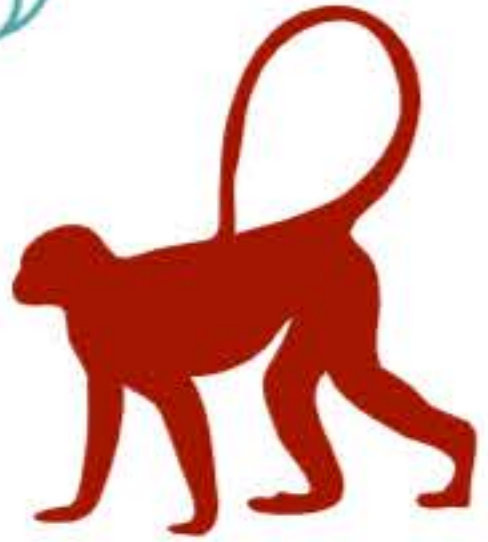


<p>Chosen herbivore:</p> <p>Scientific name:</p> <p>Maori name:</p>	<p>Habitat:</p>
<p>Diet and how it gets its food:</p>	<p>Record any information about the animal's ecological niche</p>
<p>Observe its locomotion, limb movement and structure. Describe how it moves. Can you provide any reasons for this?</p>	<p>Research the structure of your animal's front limb. Write some notes about the bone structures and features that allow it to survive in its habitat. Comment on any other adaptations that help with movement. Include a labelled diagram.</p>
<p>Describe the body structures that let it move in this way. Can you provide reasons for this?</p>	



Choose a primate species. Observe it in its enclosure, and use the information available around its enclosure to record details about the way it lives and its ecological niche.

Observation  
and  
Reporting



<p>Chosen primate: Scientific name: Maori name:</p>	<p>Habitat:</p>
<p>Diet and how it gets its food:</p>	<p>Record any information about the animal's ecological niche</p>
<p>Observe its locomotion, limb movement and structure. Describe how it moves. Can you provide any reasons for this?</p>	<p>Research the structure of your animal's hands and feet. Write some notes about the bone structures and features that allow it to survive in its habitat. Comment on any other adaptations that help with movement. Include a labelled diagram.</p>
<p>Describe the body structures that let it move in this way. Can you provide reasons for this?</p>	



Observation  
and  
Reporting



Choose a reptile species. Observe it in its enclosure, and use the information available around its enclosure to record details about the way it lives and its ecological niche.



<p>Chosen reptile: Scientific name: Maori name:</p>	<p>Habitat:</p>
<p>Diet and how it gets its food:</p>	<p>Record any information about the animal's ecological niche</p>
<p>Observe its locomotion, limb movement and structure. Describe how it moves. Can you provide any reasons for this?</p>	<p>Research the structure of your animal's front limb. Write some notes about the bone structures and features that allow it to survive in its habitat. Comment on any other adaptations that help with movement. Include a labelled diagram.</p>
<p>Describe the body structures that let it move in this way. Can you provide reasons for this?</p>	