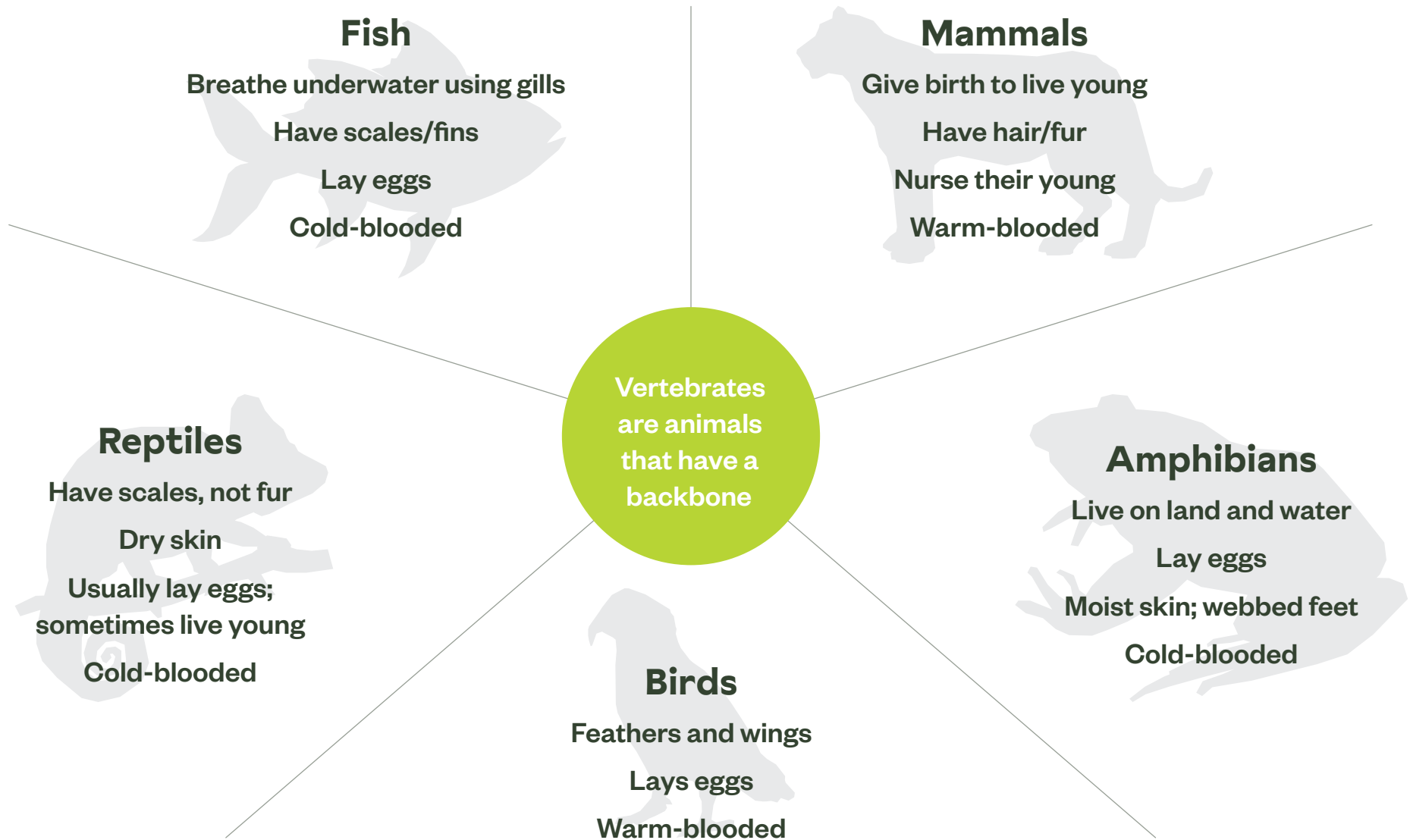


Classification of Vertebrates



Living or non-living?

Are these things living or non-living?



.....



.....



.....



.....



.....



.....



.....



.....

Warm or cold blooded

Colour these orange or blue to show whether they are warm or cold blooded animals



Orange for warm-blooded or blue for cold-blooded



Functions of adaptations

Draw one of our zoo animals that fit each of these classifications



Hint: Think about where the animal lives and what it is covered with (fur, feathers, scales?)

Mammal



Reptile



Amphibian

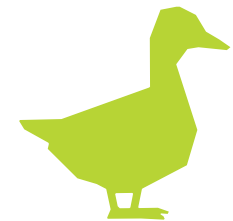
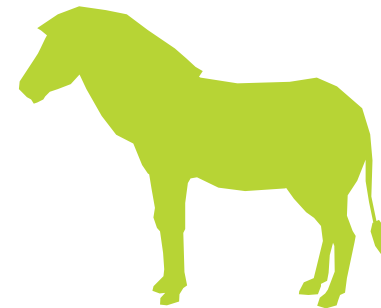


Bird

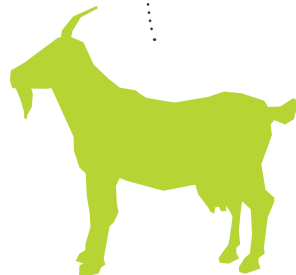
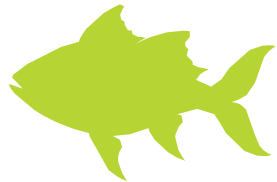


Animal coverings

Draw a line from each animal to its covering



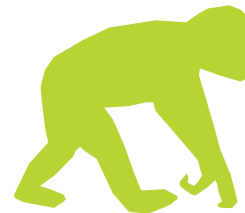
Feathers



Fur

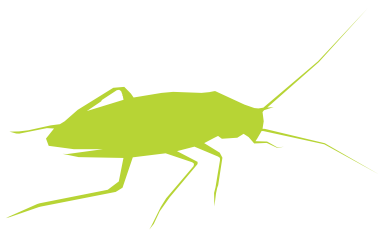


Scales



Vertebrates or invertebrates?

Circle whether these are vertebrates or invertebrates



Vertebrate
Invertebrate



Vertebrate
Invertebrate



Vertebrate
Invertebrate



Vertebrate
Invertebrate



Vertebrate
Invertebrate



Vertebrate
Invertebrate



Vertebrate
Invertebrate



Vertebrate
Invertebrate

Pick an animal at the zoo and see if you can find out all it's classifications.

 **Hint:** You can get a lot of this information from the signs outside the animals' enclosures.

English name:

Scientific name:

Māori name:

Sketch your animal here



7 Levels of Classification

Kingdom:

Phylum:

Class:

Order:

Family:

Genus:

Species: