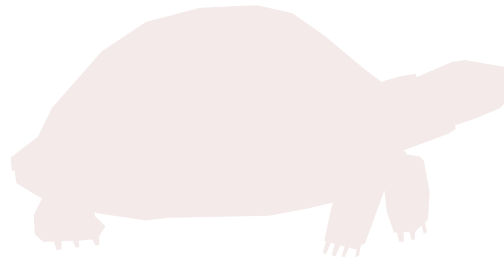


# Learn about different adaptations

## Behavioural

Things that organisms do



## Physiological

Number of offspring, ability to digest certain things, etc



## Structural

Features you can see (colour, shapes, limbs)



Most  
adaptions fit  
into one of these  
categories

# Match the adaptation to the animal

HAMILTON  
ZOO

at Te Kaaroro  
Nature Precinct

## Who

Has long arms to easily move through trees?

Has webbed feet to help them swim?

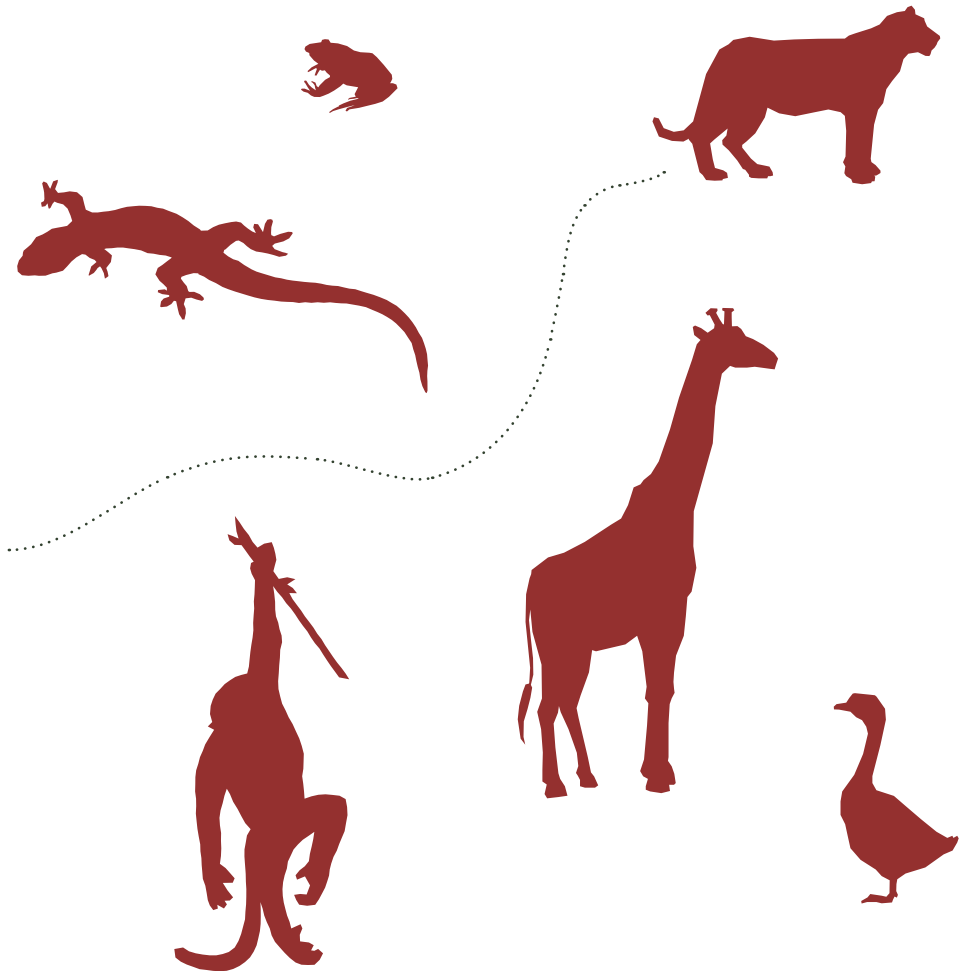
Has black and white stripes to blend in with each other and confuse predators?

Has stripy markings to hide when hunting prey in the trees?

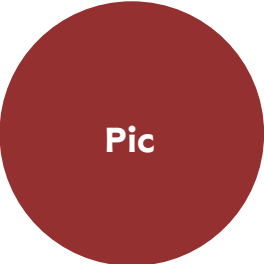
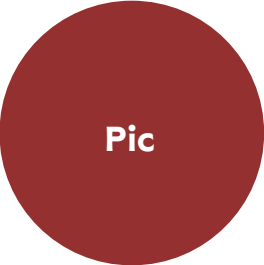
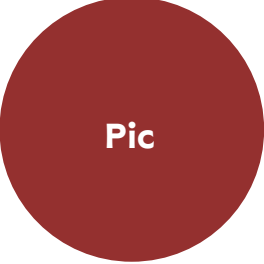
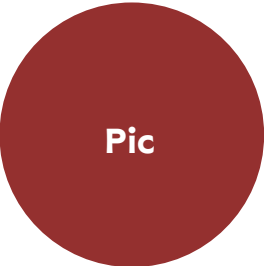
Has a long neck for reaching leaves on tall trees?

Has camouflage to blend in with surroundings?

Can lose their tail to escape predators?



# Match the bird to its beak



What bird do you think  
has this beak?

What do you think this bird eats?  
How is this beak suited to this food?

# Functions of adaptations

Choose two animals and show their adaptations and the functions of the adaptations  
(For example, a lemur has a long tail to help it balance as it moves through trees)

Animal: .....

Animal: .....

Adaptations	Functions

Adaptations	Functions

# Guess the animal

Can you guess what animal has these coverings/markings?  
How do they help this animal in the wild?

This is a .....

This helps the animal by...

Pic

This is a .....

This helps the animal by...

Pic

This is a .....

This helps the animal by...

Pic

This is a .....

This helps the animal by...

Pic

This is a .....

This helps the animal by...

Pic

This is a .....

This helps the animal by...

Pic